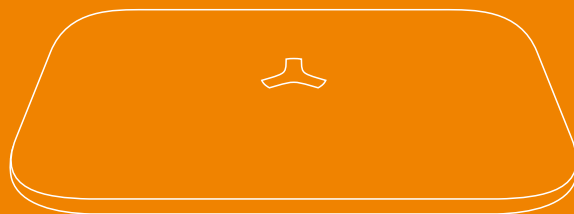


# Smart Wi-Fi/GSM Alarm System User Manual



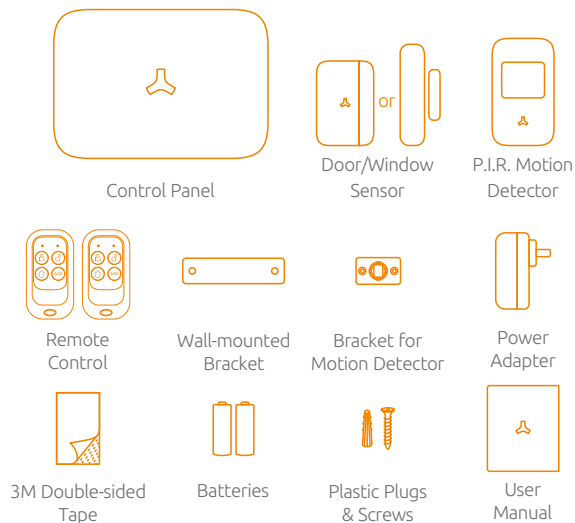
## Content

01	Product list
02	Features
03	Working Status of Control Panel
	<b>Quick Start Guide</b>
05	Installation of The Control Panel
	<b>Included Accessories</b>
08	PIR Motion Detector
11	Door/Window Sensor
13	Connect Alarm System to the App
13	Mobile App Setup
17	Alarm System Dashboard
	<b>Accessories Management</b>
20	Accessories Enrollment
22	Configure the Accessories
23	Zone Setup
24	Recent Activity
25	Notification Rules
26	Electrical Facility Control
27	Phone Remote Control
	<b>Set UP</b>
28	Device Setup
32	Other APP Settings
33	Smart Home Automation
35	Connecting Wired Accessories & Linkage Electronic Facilities
37	SMS Text Operation
38	Specification
41	Q & A

The dual network security system is built to offer convenient, real-time monitoring and flawless home security. It protects your home 7/24. The control panel is the brain of security alarm system, which is able to communicate with all wireless sensors. If an intrusion is detected or if an abnormal amount of smoke is detected, it triggers an immediate alarm and send you notification by SMS, push notification and calls.

### Product List

Please remove all supplied contents from packaging as below. If there' re anything missing, please return to your place of purchase.





## Features



Totally Wireless,  
DIY Installation



105dB Siren



24 Hours Protection



Entry/Exit Delay



Wi-Fi + GSM,  
Double Safety



FHSS Frequency-Hopping  
Spread Spectrum



Immediate  
SMS Alerts



3 Groups of SMS  
5 Groups of Phone Call  
2 Groups of Central  
Monitoring Station



6 Hours  
Battery Back-up



10 Customizable  
Remote Control Name



Added on up to  
50pcs Sensors



Door Sensor  
Open/Close Monitoring



50 Zone Names

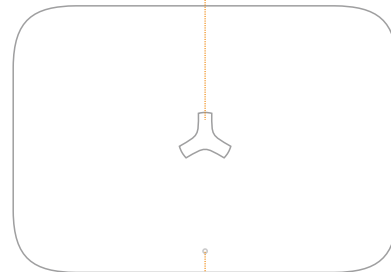


iOS & Android App,  
Easy to Setup

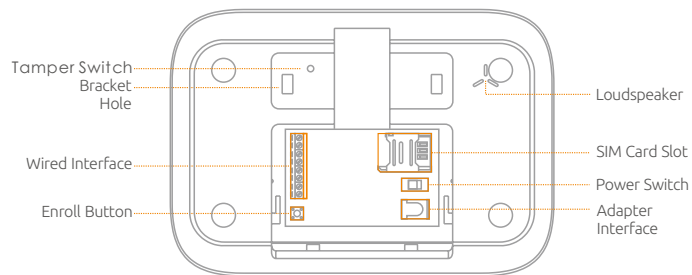




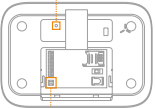
## Working Status of Control Panel Appearance

White LED: Arming / Disarming  
Red LED: Control Panel Status



Green LED: AC Power  
Yellow/Red LED: GSM Signal Indicator

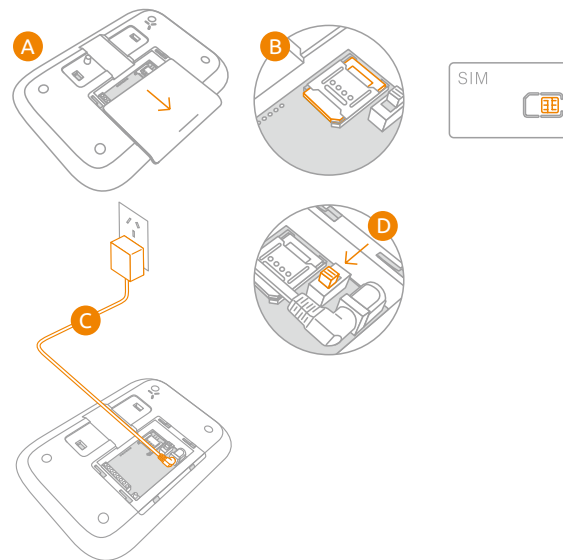


No	Name	Function
1	Status LED Indication 	<p><b>Red LED</b>  <b>Normally on:</b> In enrolling status  <b>Flashes quickly:</b> Sending SMS or connecting WiFi network in smart mode  <b>Flashes once a second:</b> Alarming  <b>Flashes once in 2 seconds:</b> connecting WiFi network in AP mode.</p> <p><b>White LED</b>  <b>On:</b> System armed in away mode.  <b>Off:</b> System disarmed  <b>Flashes slowly:</b> Systems armed in stay mode.  <b>Flashes quickly:</b> WiFi network lost.</p>
2	Power/Signal LED Indication 	<p><b>Green LED</b>  <b>On:</b> Power on  <b>Off:</b> Power off</p> <p><b>Orange LED:</b>  <b>Flashes quickly:</b> Searching GSM network  <b>Flashes normally:</b> GSM network found</p>
3	Button Tamper Switch  Enroll Button	<p><b>Tamper Switch</b>  <b>Press once:</b> Trigger tamper alarm</p> <p><b>Enroll Button:</b>  <b>Press once:</b> start accessory enrolling  <b>Press and hold for 5 seconds until one beep heard:</b> start setup with app  <b>Press 7 times:</b> Delete all connected accessories.  <b>Press 5 times:</b> Restore the system to default setting. Restoring operation will not delete the enrolled accessories.</p>

## Quick Start Guide

### 1. Installation of The Control Panel

- Gently open the battery bay cover.
- Insert a SIM card and fix it.
- Insert power adapter's barrel plug to adapter socket.
- Slide the power switch to ON position.
- Test the enrollment of accessories.



#### Important:

The sim card you have purchased may not ask for a PIN. However should your SIM card requested a PIN, you can switch off the PIN request by briefly using the SIM card in a mobile phone.

## 2. Using and Testing the Remote Control(s)



- A. Press the panic button “ SOS ”. A small display on the remote control will briefly light up.  
A loud alarm tone will immediately sound and the symbol on the control panel will flash red .
- B. Turn the alarm off again by pressing the disarm “ ” button.  
Congratulations!  
Your remote control( s ) are working!

## 3. Using and Testing the Door Sensor



- A. Pull out insulating strip.



- B. Arm the system with “ ” button.

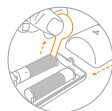


- C. Now separate both parts of the sensor and hold them at least 5cm away from one another.  
A red light will briefly flash on the sensor



- D. As soon as the alarm sounds, disarm the control panel with “ ” on the remote control.  
Congratulations.  
The door sensor is now working!

## 4. Using and Testing the Motion Detector



- A. Carefully open the cover of the motion sensor by pressing the clip and pull out insulating strip.



- B. Fix the cover by the short screw.



- C. Arm the system with “ ” button.



- D. Now press the small, black button (program) on the rear of the motion sensor.



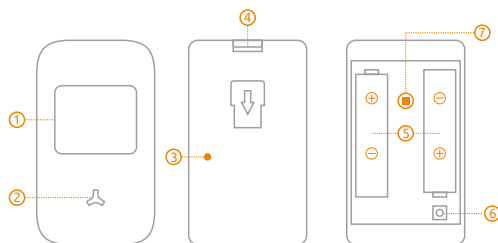
- E. As soon as the alarm sounds, disarm the control panel with “ ” on the remote control  
Congratulations.  
The motion sensor is now working!



## Wireless P.I.R Motion Detector

### Features

The passive infrared sensor with novel and beautiful style, perfect streamline can be easily installed. It is designed to detect human movement indoor. Adopted advanced fuzzy logic chip and intelligent analysis distinguish signal between body movement and interference to minimize false alarms. The built-in buzzer remind you low battery state and event of tamper alarm, which ensure your safety.



1. Detection Window
2. LED Indicator
3. Learning Button
4. Clip
5. Battery Compartment
6. Tamper Switch
7. Infrared Sensor

**Infrared Sensor:** Detects the infrared rays released by human body motion. Please do not touch the surface and keep it clean.

**Tamper Switch:** Once the case is opened, the tamper switch will be triggered, generating an alarm signal.

### Status Indicator



**LED Flashed Once:**  
Movement is detected, Tamper alarm.

**LED Flashes Once every 3 seconds:**  
Low battery indication.  
If it's in low battery state, please replace it immediately.

### Test Mode & Normal Operation

With the Detector powered on, the light should turn on immediately and will keep flashing while the sensor warms up, for approximately 15 seconds. It will then turn off.

**Test Mode:** After warm-up, walk through the coverage area and the light should turn on. This confirms that the movement is detected. The detector will recognize the movement 5 times. The interval time between each detection should be more than 2 seconds. Then it enters in sleeping mode.

**Sleeping Mode:** The detector will go to "sleep mode" for 3 minutes. It will sense motion or movement twice after "sleep mode". The mode helps save considerable amounts of energy when the house or apartment is inhabited and people are constantly moving around. In case of an alarm, however, the two detection is enough to trigger an alarm.

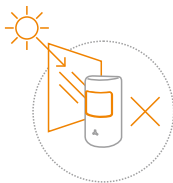
### Walk Test:

After the sensor warm up. walk across detection area and watch the LED indicator to make sure it flashes once when detecting the movement.

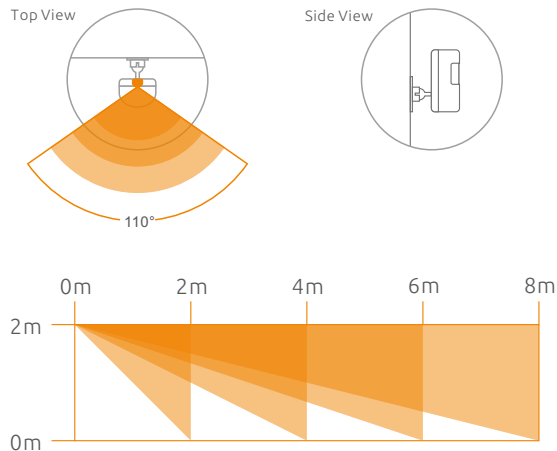


## Notice

1. Avoid mounting the detector close to places where heat changes fast or air stream flows frequently. (ie. Air conditioner, tube light, oven, waver, refrigerator etc.)
2. Avoid it facing to window which can be easily interfered by complicated environment. (ie. sunlight, crowds, or flowing cars etc.)
3. The product can reduce the possibility of accident, but the user is advised to take all necessary precautions for the safety and the protection of the property.



## Detection Area



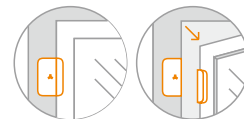
## Wireless Door/Window sensor

The Door/Window Sensor can be installed on doors, windows and any other objects that open and close.

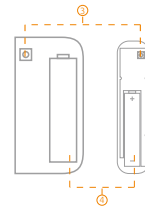
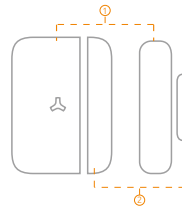
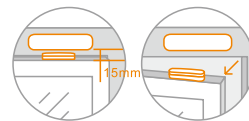
The sensor transmits signal to control panel when the magnet mounted near the sensor is moved away.

The tamper protection ensures that sabotage attempts to move the sensor will result in an alarm activation.

Vertical Installation



Horizontal Installation



1. Transmitter
2. Open-close magnet
3. Tamper Switch
4. Battery Compartment

**Tamper Alarm:** Once intruder attempts to move the sensor, the control panel will send tamper alarm message to user at the first time.

## Working Status:



### LED flashes once:


Door or window is opened.  
and the transmitter sends signal to the control panel.  
Tamper alarm.

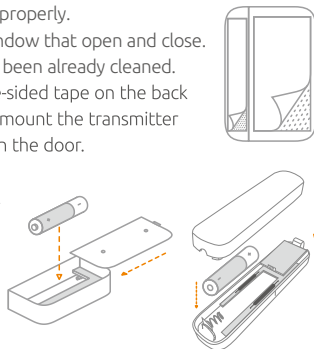


### LED Flashes Once every 3 seconds:

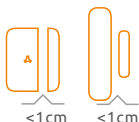
Low battery indication.  
If it's in low battery state, please replace it immediately.

## Installation:

1. Open the case and install the battery properly.
2. Sensor can be installed on door or window that open and close.  
Make sure the installed position have been already cleaned.
3. Remove the paper strip of the double-sided tape on the back of transmitter and magnet. Carefully mount the transmitter on the door frame and the magnet on the door.
4. Keep LED Indication light  at the right direction. Make sure the magnet is on the right of the transmitter.
5. Place the transmitter in the desired location, mount the magnet no more than 1cm away from the transmitter.
6. Avoid mounting sensors in areas with a large quantity of metal and electric wiring.



**Note!** The door sensor is set in Normal Zone1 as default.  
It will cause on immediate alarm if the magnet depart from the transmitter more than 2cm in arming state.



## Download App

Please enter keyword **"Smart Life"** on your smart phone to download the App from the Apps store or Google Play.



Smart Life

Wi-Fi Network: 2.4GHz (802.11 b/g/n).

iOS Requirements: iPhone 4S or newer running iOS 8 or higher.

ANDROID Requirements: Android 4.0 or newer.

## Create an Account

Tap on **"Register"** and follow these steps to create an account for your devices.



## Connect Alarm System to the App

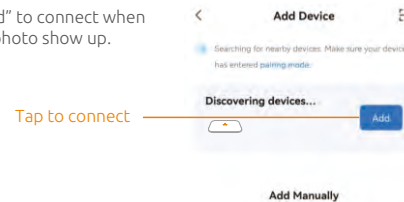
### Add Device

Tap on "  " or " + "

### A. Bluetooth Fast Pair

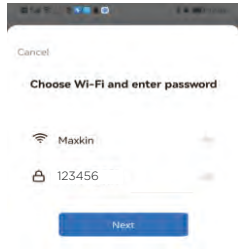
The app is searching for nearby Bluetooth devices.

1. Tap on "Add" to connect when the device photo show up.

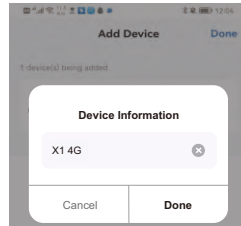




2. Enter Wi-Fi network and password, then tap on "next".

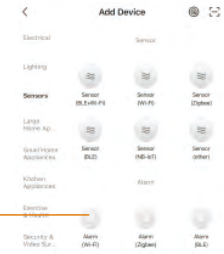


3. Device added successfully. Then you can rename the device and choose where you place the device.



## B. Configure by selecting the category

1. Tap on "Sensor" and choose "Alarm(Wi-Fi)"



2. Select 2.4G Wi-Fi network and enter your Wi-Fi password.

Select 2.4 GHz Wi-Fi Network and enter password.

If your Wi-Fi is 5GHz, please set it to be 2.4GHz.  
[Common router setting method](#)



- Turn on the device and confirm that **RED Status LED** " 🔴 " of the device flash quickly.

How to make RED Status LED " 🔴 " flash quickly?

Press and hold the Enroll Button for 5 seconds until one beep heard.

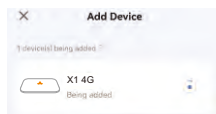
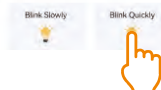
- Waiting for seconds while connecting.



- Device added successfully. Then you can rename the device and choose where you place the device.

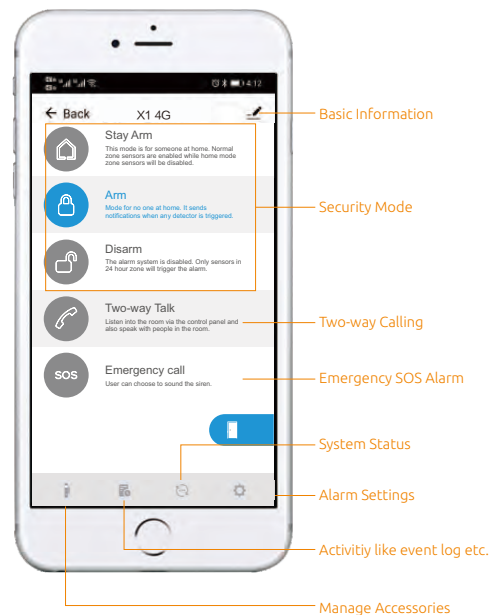


Select the status of the indicator light or hear the beep:



## Alarm System Dashboard

Once the alarm system has been connected to your app, the dashboard will be displayed.



The Alarm System has three security modes and an emergency SOS button.



#### Arm

Arm the system when leaving your home. All sensors will be activated. Any sensors that are triggered will immediately sound the alarm.



#### Disarm

Disarm the system when entering your home. All sensors will be deactivated allowing you to move freely.



#### Two-way Talk

Listen into the room via the control panel and also speak with people in the room.



#### Stay Arm (Home Mode)

Sensors that are designated in the Home Zone are deactivated, allowing you to move freely in your home. the sensors in Normal Zone will remain active and if triggered, will immediately sound the alarm.



#### Emergency Call

Press the SOS button in the event of an emergency. This will trigger an immediate alarm even if the system is disarmed or in Home Mode. To stop the alarm, press the disarm button on the app or remote control.



#### Mute Mode

Press stay arm button, then press arm or disarm button within 3 seconds to enter into arming or disarming state in mute mode without disturbing someone.

(Note: Mute Mode only works for operation via Remote Control.)

## 2 Ways to Control the Alarm System

You can arm, disarm and switch between security modes using:

- 1.Smart Life Apps
- 2.Remote Control

Tap on device "X1", enter the device interface.



Through the Remote Control (Press and hold the buttons for about 1 sec.)



Arm


Disarm

Emergency Call

Home Mode



## Accessories Management

Tap on "  Accessories " icon to enter accessories menu, you can customise the accessory name, select the zone type, and also delete the accessory from the app, if required.

### Accessories Enrollment & Zone

Accessories in the standard kit were enrolled by default. More accessories can be paired in two ways.

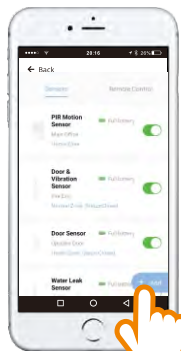
You are able to pair up to 50 additional sensors, and 10 remote controls or keypads to the alarm system. Sensors that are included with the alarm system are already enrolled with the control panel.

#### Press the enroll button .

Step 1, Press the enroll button on alarm panel or select the "  Accessories " on the dashboard to enter the Accessories Menu, then tap on "  Add " icon.



By enrolling button



+ Add

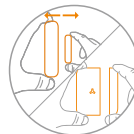
Step 2, Trigger the sensors one by one.

How to trigger different accessories:

#### Sensors



Press the black button on the rear of the motion sensor.

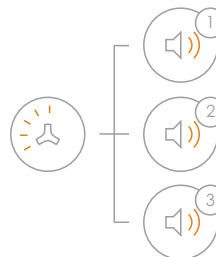


Move the transmitter away from the magnet



Press any button on the remote control.

#### Remote Control




1 System beeps once, the LED light flashes once, the enrollment is successful.

2 If system beeps twice and the LED light flashes once, the accessories have been enrolled before.

3 If three beeps are heard and LED light flashes once, the storage is full.


(Note! Please don't press tamper switch to enroll or enroll accessory in low battery status, it will remain in enrolling mode for 30 seconds.)

Step 3, Press the enroll button again or press "  " icon on the app to exit the enrolling . The enrolled sensors will automatically appear in the Accessories menu in the app.



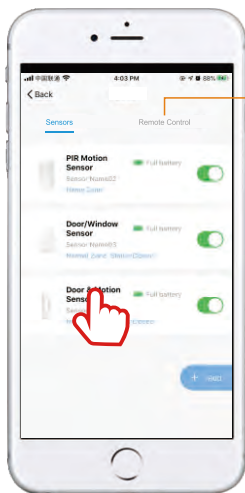


## Configure the Accessories

Tap on "  Accessories " icon on the dashboard to enter the Accessories menu.

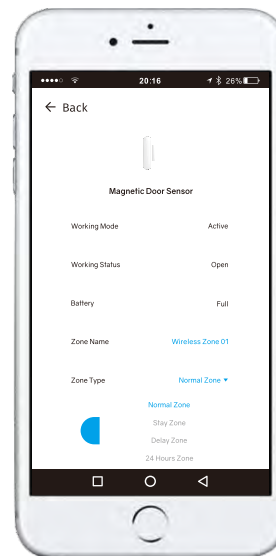
You are able to enable and disable accessories from this page. We recommend that you give each accessory a unique name so it is easier to recognise the location should an alarm be triggered.

You can also assign each sensor to a Zone Type (see page 23) To configure any accessory, simple press the accessory name.



Name the Remote Control, so you will receive the alerts that tell you whose remote control has armed or disarmed the Alarm System.

## Zone Setup



### Normal Zone

The alarm is activated immediately when triggered.



### Delay Zone

It allows a delay before entry or exit especially for sensors in single delay zone. But accessories in normal zone, home mode zone, and 24H zone will not be delayed.



### Stay Zone

Press "  " button, sensors in home mode zone are disabled then the users can move freely. While the sensors in normal zone will still activate an immediate alarm when triggered.



### 24 Hour Zone

No matter what state the alarm system is in, the accessories in 24 Hour zone are triggered, the control panel will get the signal and alarm immediately.

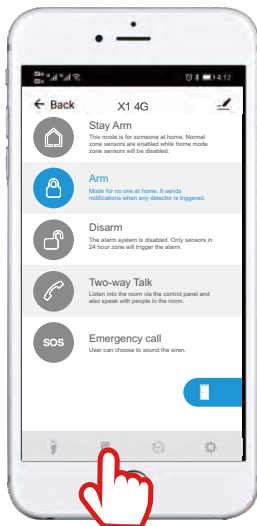
 :Full power,  :Low Battery

To delete an accessory, tap on "  ", and then confirm to delete.



## Recent Activity

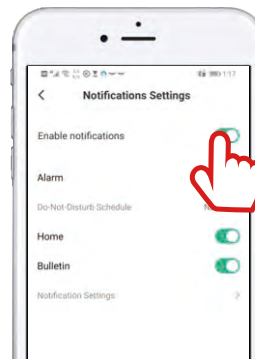
The alarm system monitors your home for activity and sends you an app push notification, calling or SMS when sensors are triggered. All events can be checked by tapping on "Recent Activity".



## Notification Rules

	Push Notification	SMS	Call	Mark
Smart Alarm WiFi ON	✓	✗	✓	Call phone number 1,2,3,4,5 If anyone pick up the phone, then it will stop calling next. If anyone disarm by clicking on button from notification window, then the call ends too.
Smart Alarm WiFi OFF	✗	✓	✓	Call phone number 1,2,3,4,5 If anyone pick up the phone, then it will stop calling next.


Note: If no one pick the phone, the system will keep dialing for 3 times.



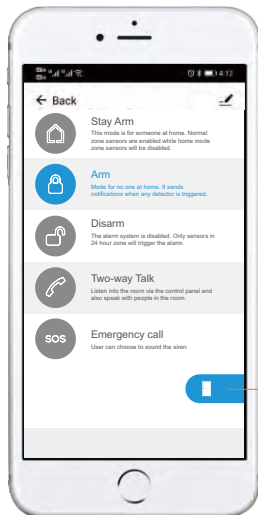
If "Me-Setting-App Notification" is disabled, then you will not receive app notification when events are detected but still have calling alert or SMS alerts.



## Electrical Facility Control

Tap on “” to turn on electronic facilities like lights, or fences to deter the intruder immediately in the event of alarm.

**Note!** Electrical Facility is Off as default. To activate electrical facility, AC power of control panel must be on.



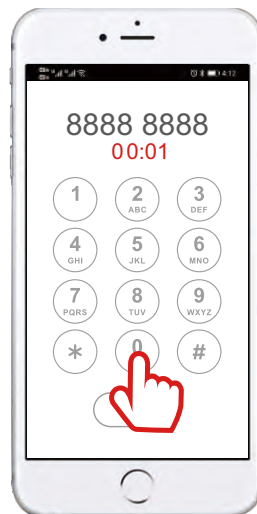
The alarm supports external sensors and door lock.  
You must switch the alarm power on to activate other external sensors connected.

Tap to unlock door/gate  
See page 36 for connection details.



## Phone Remote Control

In the event the alarm, the alarm system will call the preset phone number, user can pick up the phone, monitor the site, and remotely control system by entering below numbers.



Disarm the system, press 0;  
Arm the system in the away mode, press 1;  
Turn on on site siren, press 7;  
Turn off on site siren, press 8;  
Monitor the site, press key;  
Press escape (#) or hang up to exit.



## Device Setup

Tap on "  Setting ", enter the setting interface.



### Google Home Security Code

Use the security code to disarm the alarm system via Google Home.  
Voice Control for Google Home :  
Disarm "device name".  
Set "device name" to home mode  
Set "device name" to away mode



### Store Alarm Phone Numbers

Add phone numbers you want to control over. These numbers consist of three SMS numbers (receiving security messages and alerts), five Tel numbers (receiving alarm calls), and two CMS numbers.  
It's recommended to set the numbers according to the priority.

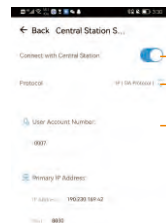


### Central Station Setting

The system support Ademco Contact ID and SIA TCP/IP protocol  
It's able to communicate alarms and events directly to the Central MonitoringStation.  
The phone number of alarm system should be filled on the setting menu.

**Note:** Communication of events in SIA DC-09 format is feasible if the CMS software supports this protocol.

Connect the alarm panel to the central monitoring station by using the SIA protocol



Enable Connect with Central Station

Select CONTACT ID or IP(SIA Protocol).

Enter the account number of alarm panel, specify the central station tel number or the primary and secondary IP address of the CMS.

### Setting



Configure reception of events on the CMS and specify the encryption key if you intend to use encryption.  
The encryption key may contain up to 32 HEX or 16 ASCII characters.





### Schedule

Schedule the arming and disarming of your security systems at your convenience. Time tolerance may be about +/- 30 seconds.



### Exit/Entry Delay

Set exit/entry delay time for accessories in single delay zone. It allows users to leave or enter home within the programmed time without activating an instant alarm. Once entry/exit delay time is set, when system is armed, in case of delay time less than 10 seconds, control panel will beep once every second. While delay time more than 10 seconds, control panel will beep once every 2 seconds, the sound will increase in tempo for the last 10 seconds for the "hurry up" notification. Once an entry is detected, it will allow the user to enter and disarm the system within the programmed entry time.



### GSM Signal Monitoring

When the GSM signal is lost, the system will raise an alarm. When GSM signal is lower than 20, the system will send SMS notification.



### Remote Control Armed/Disarmed Alert

When the system alarms, users can choose whether to get push notifications and SMS alerts if someone operates it via remote control. Get notified who is operating the system via remote control.



### Door Sensor Monitoring

Be notified if a Door/Window has been left open when the Alarm System is armed.



### Wired Sensor Type

Choose the types of wired sensors after they are connected, N.C. or NO.



### Alarm Type

User can set the siren to be audible or silent when it's alarming.



### Local Siren

When you turn on the local siren, the control panel will alarm immediately.



### Siren Duration Time

User can set the siren duration from 0s to 300s, the device will be in mute when user set it to 0s.



### Device Language

Change system language as you want.



### Sim Card Balance

Send balance check code via SMS to the card operator.



### Security Code for Disarming

The security code is used to control the system by sending SMS (should be 4 digits).

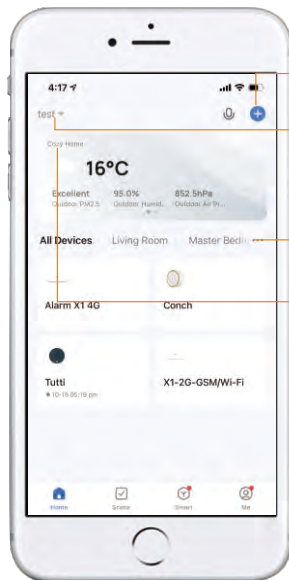


### Phone Number of Alarm System

Add phone number of the one you insert in the alarm system.

## Other APP Settings

### My home



● Add devices

● Home Management


Family settings: Name change/  
Room management/Family  
location/ Share advice  
Add Family/Add rooms.

● Room Management

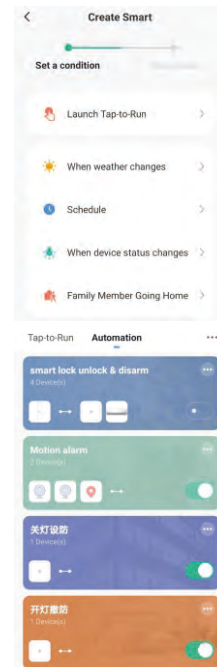
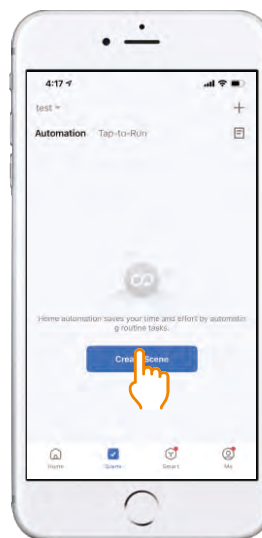
Add/Delete/Edit rooms

● Set Home Location

## Scene

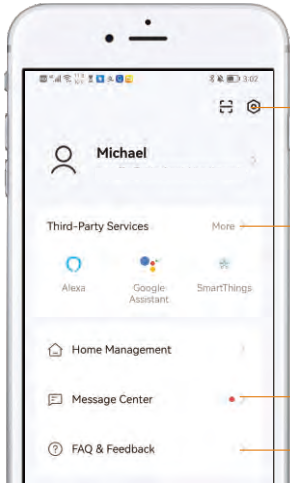
Tap on "  " to add smart scene or automation of your connected devices.

For example, arm the system, and turn off the smart bulb.  
Or disarm the system, and then turn on the smart bulb.  
Or to execute the actions according to different conditions. For example,  
when temperature greater than 40 °C, trigger the alarm system.





Me



Sound: Turn on/off the sound of the key on APP.  
Notification: Receive the push notification or not.

Sound

Push Notification



Add other services, like Alexa...

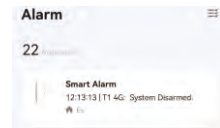


Alexa



Google Assistant

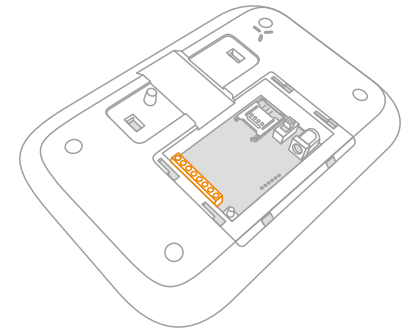
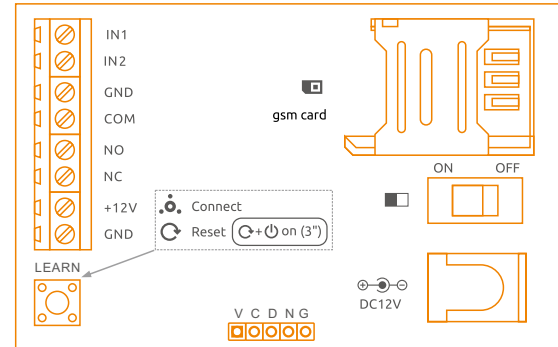
Check the activities of the system



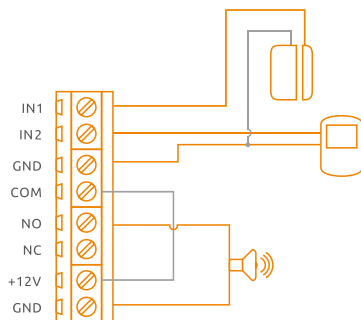
Write down and send us your issues or complaints or any feedback.



## Connecting Wired Accessories & Linkage Electronic Facilities



Wired Interface 1  
(24-hr Zone)  
Wired Interface 2  
(Normal Zone)  
Ground  
Common Port  
Normal Open  
Normal Close  
Power Output for  
Wired Accessories  
Ground



#### Wired Accessories:

It supports 2 groups of wired accessories.  
Please choose the wired sensor types after connected.

#### Connect Wired Sensor to Wired Zone 1 or 2

Connect one wire to 1 or 2 block while another to GND block.  
Sensor type can be selected on the mobile APP.

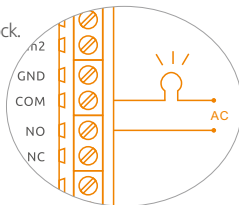
#### Connect Wired Siren

Connecting Wired Siren or strobe light .  
Connect the Positive terminal to N.O  
block. While the Negative terminal to GND block.  
Then link COM block and + 12V block.

**Note:** The maximum current of the device  
should not more than 500mA.

#### Linkage AC Electronic Facilities:

It is able to turn on electronic facilities like  
lights, locks or fences to deter the intruder  
immediately in the event of alarm.



**Note!** Wired accessories need DC 12V power support.  
They can't be used when only with built-in battery.



## SMS Text Operation

If the Wi-Fi internet ever drops out, the GSM unit will quickly take over and send signals out. It's recommended to use mobile apps to control the system even when the system works in GSM mode. And it's easy for users to manage functionality through your cell phone by sending SMS text commands listed as below.

Function	SMS Text Operation		
	Send this operation code from your cell phone	SMS reply you will receive	Remark
Disarm	1234#0	System Disarmed	—
Arm	1234#1	System Armed in Away Mode	—
Stay Arm	1234#2	System Armed in Stay Mode	The Arm/Stay function will arm the system with sensors in normal zone activated immediately, but sensors in home mode zone disabled.
SOS Button	1234#SOS	Emergency Call !	Trigger the immediate alarm !
Electrical Facility	1234#90	Electrical Facility off	Electical Facility is Off as default. To activate electrical facility, AC power of control panel must be on.
	1234#91	Electrical Facility on	
Two-way Talk	43	—	Send "43" to the SIM card number, the control panel will call back. You can now listen in and have a two-way talk.



## Specifications

Product Name :	Wi-Fi/GSM Alarm System
Control Panel's Power Supply :	Input: AC 110~240V/50~60Hz Output: DC 12V/1000mA
GSM Working Frequency :	2G/4G
Standby Current :	200 mA without power supply. 150 mA when power supply on.
Alarm Maximum Current	≥350mA
Internal Battery Backup :	Lithium Battery: 3.7V/1000mAh
Internal siren :	105dB
Allowed Amount of Expandable Wireless Accessories	10pcs remote controls 50pcs wireless accessories
Operating Frequency:	2.400~2.4835GHz
Wi-Fi Standards:	802.11b/g/n
Radio Frequency	FHSS 433MHz
Housing Material	ABS plastic
Operation Condition:	Temperature: -20°C~55°C Humidity: ≤80%(non-condensing)
Size (L x W x H) :	180×126×26mm



## Specifications

Power Supply:	DC1.5V (AA Battery )
Standby Current:	≤25 μA
Transmit Current:	≤70mA
Wireless Transmit Distance:	≤100m (in open area)
Wireless RF Frequency:	FHSS 433MHz
Temperature/Humidity:	-10°C-55°C/≤80% (Non-condensing)
Detector Dimensions(L x W x H):	24.5 x 96.5 x 19.5 mm
Magnet Dimensions (L x W x H):	14 x 48 x 11 mm



## Specifications

Power Supply:	DC1.5V (AA 1.5V Lr6 Battery x1)(EXCELL, GP)
Standby Current:	≤20 μA
Transmit Current:	≤70mA
Wireless Transmit Distance:	≤100m (in open area)
Wireless RF Frequency:	FHSS 433MHz
Temperature/Humidity:	-10°C-55°C/≤80% (Non-condensing)
Dimensions (L x W x H):	48 x 71 x 18mm



## Specifications:

Power Supply:	DC 3V (AA 1.5V LR6 Battery x 2pcs)(EXCELL, GP)
Standby Current:	≤20 μA
Transmit Current:	≤30mA
Detection Area:	7-8m/110°
Wireless Transmit Distance:	≤100m (in open area)
Wireless RF Frequency:	FHSS 433MHz
Temperature/Humidity:	-10°C-55°C/≤80% (non-condensing)
Detector Dimensions (LxWxH):	90x52x36.5mm
Bracket Dimensions (LxWxH):	48x26x29mm



## Specifications:

Power Supply:	DC 3V (2pcs CR2032 button cell batteries)
Transmit Current:	≤25mA
Wireless Transmit Distance:	≤100m (in open area)
Transmitting Frequency:	FHSS 433MHz
Housing Material:	ABS plastic
Working Temperature:	-10°C-55°C
Humidity:	Up to 80% (non-condensing)
Dimension(L/W/H):	37x70x11.5mm



## Frequently Asked Questions

### 1. Is it possible to expand more accessories for this security system?

Yes, 50pcs sensors and 10 remote controls can be expanded according to users' need. Full range of accessories will be offered including PIR motion sensors, door sensors, vibration sensors, flood sensors, keypads, sirens, premiere protection beams & fences, and environmental sensors like smoke sensors.

### 2. What happens in case of alarm?

Wi-Fi alarm sends the push notification directly to your mobile apps. If there's GSM cellular for backup, when the WiFi network is offline, it will also send you the SMS and voice call. You can respond immediately via the apps, SMS, or key operation of the phone.

### 3. What internet connection do I need for Wi-Fi system?

All contemporary Wi-Fi standards on 2.4 GHz are supported. The Internet speed has effects on the system performance. A fast and well-functioning Internet connection is recommended for optimum performance.

### 4. Do I have to pay for the app?

All available Smart Life Apps are free to download (App Store or Google Play). The complete functionality is free.

### 5. How to download the app for the security system?

Go to App Store or Google Play to download the application by entering the keyword of "Smart Life".

### 6. Is Smart Life app applied to all mobile phones?

For all smartphones with a recent version of an iOS or Android operating system, this app is available to download and use. For this functionality, depending on the system, a mobile connection or mobile Internet / Wi-Fi connection is necessary.

### 7. What's the maximum range between the control panel and accessories?

It's 100 meters in open area. The walls might shorten the distance, it's recommended to install the accessories at the right place, and move the panel to adjust a better signal receiving. If the house is too large, it's better to add a signal repeater to boost the coverage.

### 8. Will my alarm system work in the event of a power failure?

Yes. The system has rechargeable back-up batteries which can support it working for 6 hours. When the power is recovered, the battery will be recharged. Adapter wire cannot be cut to make sure enough power to the panel.

### 9. The SIM card was installed in the control panel, but it cannot connect to the GSM cellular network.

- A. The alarm system support only GSM SIM card, SIM Card for CDMA network will not work.
- B. Make sure the system is off when you insert SIM card .
- C. Watch the bottom LED light, if the LED flashes quickly, the GSM signal is unnormal , please move the control panel near the outside wall or window to improve the signal reception.
- D. SIM card must be activated, and make sure there's enough credit in the SIM card.

### 10. What will happen once power is off or internet is cut?

Once power is off or network is cut, the system will communicate by GSM network. When it's alarming, user will receive alert by SMS and calling.

## PIR Motion Detector

### 1. Why PIR Motion Detector beeps without detecting intruders?

If PIR Motion Detector beeps, and LED indicator flashes continuously, the detector is in low battery. Please change the battery immediately.

### 2. Why PIR Motion detector does not detect movement?

- A. Please make sure the control panel is in arming status, not at stay (home) mode or disarming status.
- B. Please make sure the LED of PIR motion detector lights up when you walk in the detection area.
- C. Movement should cross the detection and within 8 meters range.
- D. The detector enters sleeping mode to save power after 5 detection. If there's no movement within 3 minutes, the detector will reset ready to trigger the alarm.
- E. Make sure the insider battery contact well or not.
- F. Check the board put well or not.

### 3. If the PIR motion detector pet-immunity?

No. The PIR supplied in standard kit is normal PIR. If you have pets at home, please adjust the installing height to allow your pets to roam below the mounting height of the unit without causing alarms.

### 4. There's no one passerby the room, but the detector trigger the alarm

- A. Check if there's any pet at home, the PIR supplied in the standard kit is normal one, not pet-immune one.
- B. Please avoid mounting the P.I.R. motion detector at the place where rapid heat changes such as window, air conditioner, light, electric heater, refrigerator, oven, stove etc.
- C. Avoid strong sunlight.
- D. The installation height and range should be in the detection area.